



## Hard Chess Puzzle # 0095

By

G Bud Games  
<https://gbud.in>

January 4, 2022

## Contents

<b>Hard Chess puzzle # 0095 - Mate in 3 moves</b>	<b>3</b>
Hard chess puzzle 0095 . . . . .	3
Solution to hard chess puzzle 0095 . . . . .	4
Solution 1 . . . . .	4
Right moves for the solution to the hard chess puzzle 0095	7
Explanation for the moves . . . . .	7
Categories of hard chess puzzle 0095 . . . . .	8
hard chess puzzle 0095 chart . . . . .	8
How to view the solution to hard chess puzzle 0095 . . . . .	10
How to get help for moves in the hard chess puzzle 0095 . . . . .	11
Play chess for free . . . . .	12

## List of Figures

1	<a href="https://gbud.in/gscssl3">Solve this hard chess puzzle 0095. Mate in 3 moves @ https://gbud.in/gscssl3</a> . . . . .	3
2	<a href="https://gbud.in/gscssl3">Solve this hard chess puzzle online with solution @ https://gbud.in/gscssl3</a> . . . . .	3
3	Initial board position of hard chess puzzle 0095 . . . . .	4
4	Rf3+ . . . . .	5
5	Qxf3 . . . . .	5
6	Qxf3+ . . . . .	6
7	Kh4 . . . . .	6
8	Qg4# . . . . .	7
9	<a href="#">hard chess puzzle 95 chart 1</a> . . . . .	8
10	<a href="#">hard chess puzzle 95 chart 2</a> . . . . .	9
11	<a href="#">hard chess puzzle 95 chart 3</a> . . . . .	9
12	<a href="#">hard chess puzzle 95 chart 4</a> . . . . .	10
13	<a href="https://gbud.in/gscssl3">Click the solution button to view solutions @ https://gbud.in/gscssl3</a> . . . . .	10
14	<a href="https://gbud.in/gscssl3">Click the help button to get help on next move @ https://gbud.in/gscssl3</a> . . . . .	11
15	<a href="https://gbud.in/chshdpz">Solve more hard puzzles @ https://gbud.in/chshdpz</a> . . . . .	11
16	<a href="https://gbud.in/chsgppz">Solve other puzzles @ https://gbud.in/chsgppz</a> . . . . .	11
17	<a href="#">Play chess online for free. Solve puzzles and play with friends</a> . . . . .	12
18	<a href="#">Solve this puzzle online by scanning this QR code or go to the link below</a> . . . . .	13

## Hard Chess puzzle # 0095 - Mate in 3 moves

Solve this hard chess puzzle and improve your chess games through improvement of your chess strategies and chess tactics. This hard puzzle is a subset of [kids games](#).

Puzzle No : 0095

Difficulty level : hard

Description : Mate in 3 moves

Next Move : Black

Player level : Advanced

Short URL for puzzle : <https://gbud.in/gscssl3>

### Hard chess puzzle 0095

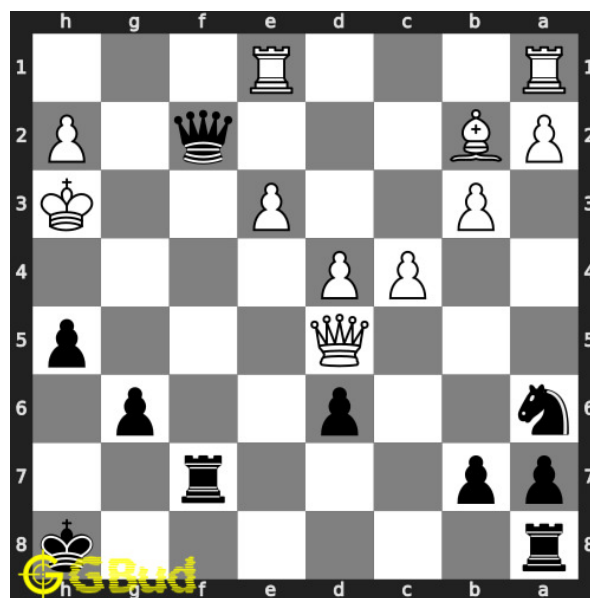


Figure 1: Solve this hard chess puzzle 0095. Mate in 3 moves @ <https://gbud.in/gscssl3>



Figure 2: Solve this hard chess puzzle online with solution @ <https://gbud.in/gscssl3>

Dont forget to check out [chess puzzles](#), [easy chess puzzles](#), [medium chess puzzles](#), [hard chess puzzles](#) and [chess puzzles collections](#) .

## Solution to hard chess puzzle 0095

At this puzzle, next [move](#) is by [Black](#). The objective of the puzzle is to mate in 3 moves.

See the interactive solution at the [puzzle page](#)

### Solution 1

**Initial board position** This is the initial board position of hard chess puzzle 0095.

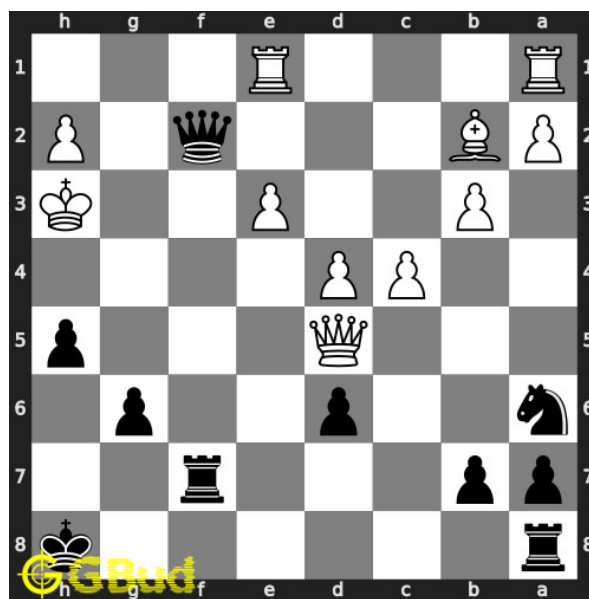


Figure 3: Initial board position of hard chess puzzle 0095

**Move 1** Move by black

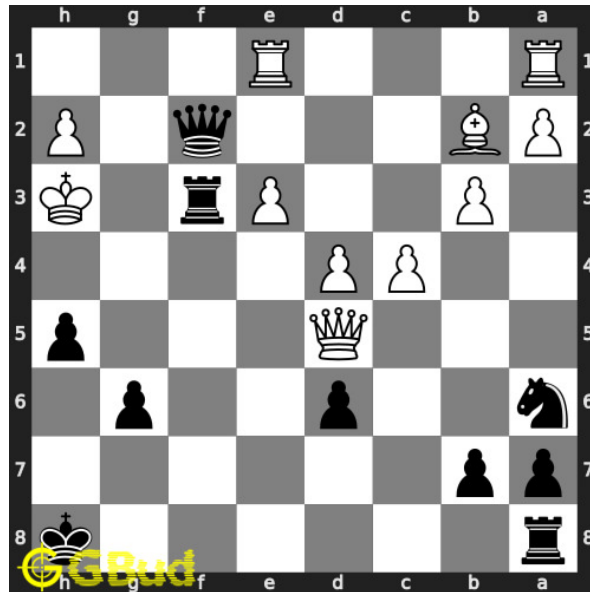


Figure 4: Rf3+

your **rook sacrifices** itself for the **checkmate**. this will force the opponent's **queen** to respond

**Move 2** Move by white

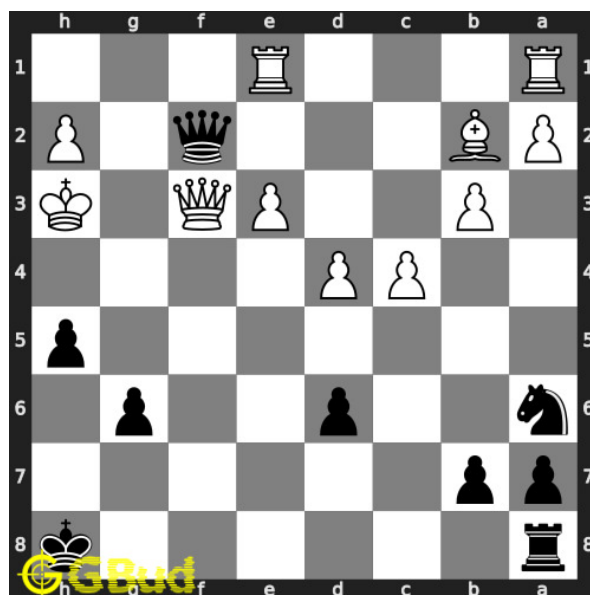


Figure 5: Qxf3

opponent's **queen captures** your **rook** as this is the only legal **move** available to escape from the **check**

**Move 3** Move by black

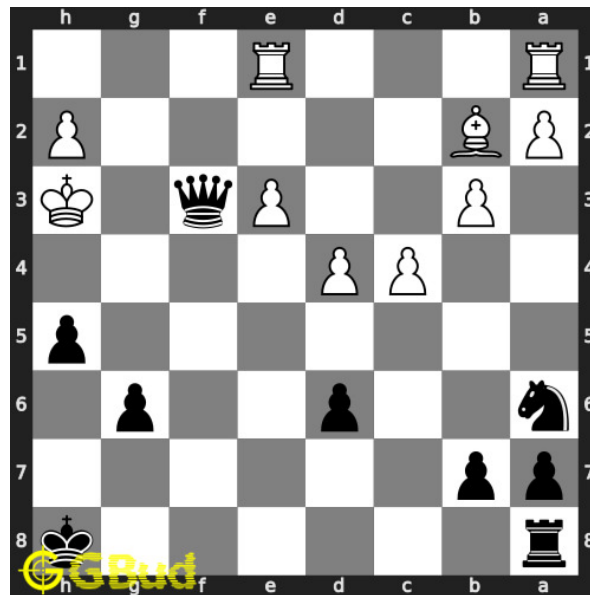


Figure 6: Qxf3+

your [queen captures](#) opponents hanging [queen](#) and gives next [check](#).

**Move 4** Move by white

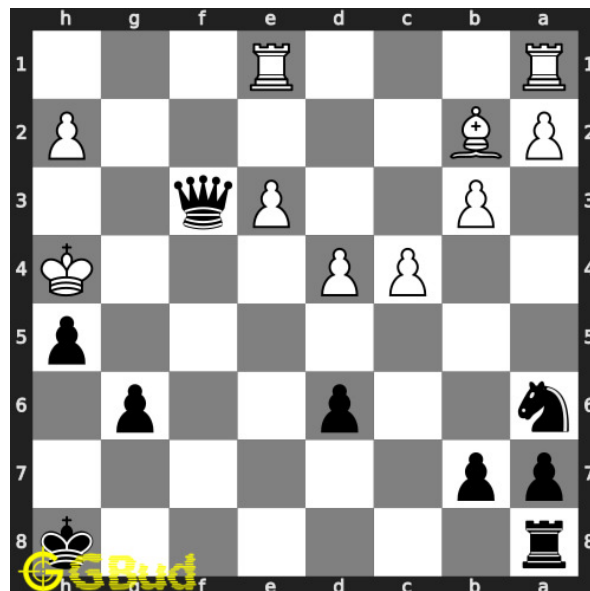


Figure 7: Kh4

opponent's [king moves](#) to h4 as this is the only legal [move](#) available.

## Move 5 Move by black

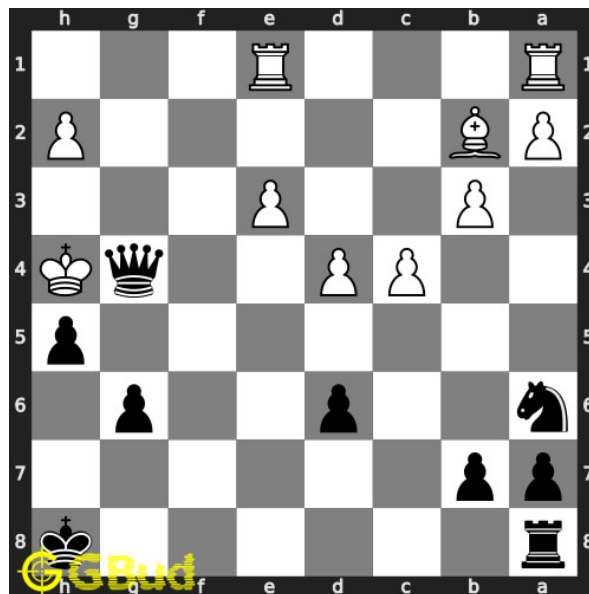


Figure 8: Qg4#

your **queen** moves to g4 and **checkmate**. opponent's **king** can't **capture** your **queen** since it is supported by **pawn**. this is how you can **mate** in 3 moves.

## Right moves for the solution to the hard chess puzzle 0095

Based on the objective of the puzzle, you have to make the right moves. Following are the right moves

1. Rf3+, Qxf3+, Qg4#

## Explanation for the moves

1. Rf3+ - Your rook sacrifices itself for the checkmate. This will force the opponent's queen to respond
2. Qxf3 - Opponent's queen captures your rook as this is the only legal move available to escape from the check
3. Qxf3+ - Your queen captures opponents hanging queen and gives next check.
4. Kh4 - Opponent's king moves to h4 as this is the only legal move available.
5. Qg4# - Your queen moves to g4 and checkmate. Opponent's king can't capture your queen since it is supported by pawn. This is how you can mate in 3 moves.

6. For right move - You have moved your rook and queen effectively and had a checkmate . Keep it up
7. For wrong move - You could have sacrificed your rook to win the game. Try again

## Categories of hard chess puzzle 0095

This hard chess puzzle falls in these categories.

1. [Hard chess puzzles](#)
2. [Sacrifice puzzles in chess](#)
3. [Mate in 3 puzzles in chess](#)
4. [Endgame puzzles in chess](#)
5. [Strategy puzzles in chess](#)
6. [Rook puzzles in chess](#)
7. [Queen puzzles in chess](#)

## hard chess puzzle 0095 chart



Figure 9: hard chess puzzle 95 chart 1





Figure 10: hard chess puzzle 95 chart 2



Figure 11: hard chess puzzle 95 chart 3

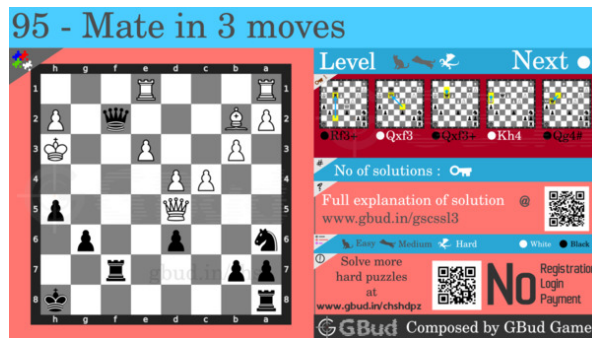


Figure 12: hard chess puzzle 95 chart 4

## How to view the solution to hard chess puzzle 0095

To view the [solution to this puzzle](#), follow the steps given below

1. Go to the [puzzle page](#)
2. Click the solution button (Key as shown [below](#)) to view the solution



Figure 13: Click the solution button to view solutions @ <https://gbud.in/gscsl3>



## Play chess for free

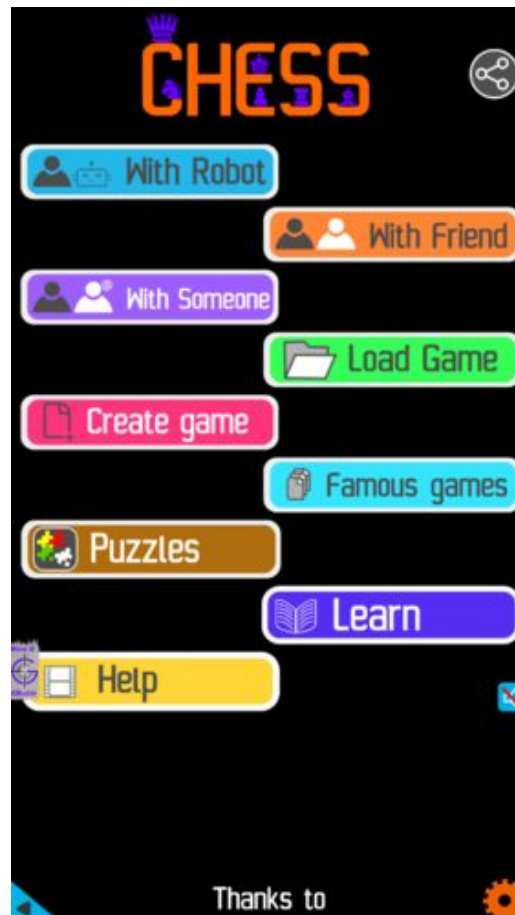


Figure 17: Play chess online for free. Solve puzzles and play with friends

Play chess for free at <https://gbud.in/chs>

We present you a platform to play chess online with friends for free. No need to install any app. You can play chess for free without registration or login.

Simple. You can do several chess related activities.

1. solve chess puzzles
2. learn about chess
3. play chess with computer
4. play chess with friend
5. create your own chess games

6. [fen viewer](#)
7. [fen editor](#)
8. [fen generator](#)
9. [pgn viewer](#)
10. [chess board editor](#)
11. [view famous chess games.](#)



Figure 18: Solve this puzzle online by scanning this QR code or go to the link below

<https://gbud.in/gscssl3>

Read the latest article on Hard Chess puzzle # 0095 - Mate in 3 moves by scanning this QR code or click the link

Previous article : « [Hard Chess puzzle # 0094 - Mate in 4 moves](#)

Next article : [Hard chess puzzles](#) »

[Back to top](#)

[Contact Us](#)